

## Gotemba Newsletter

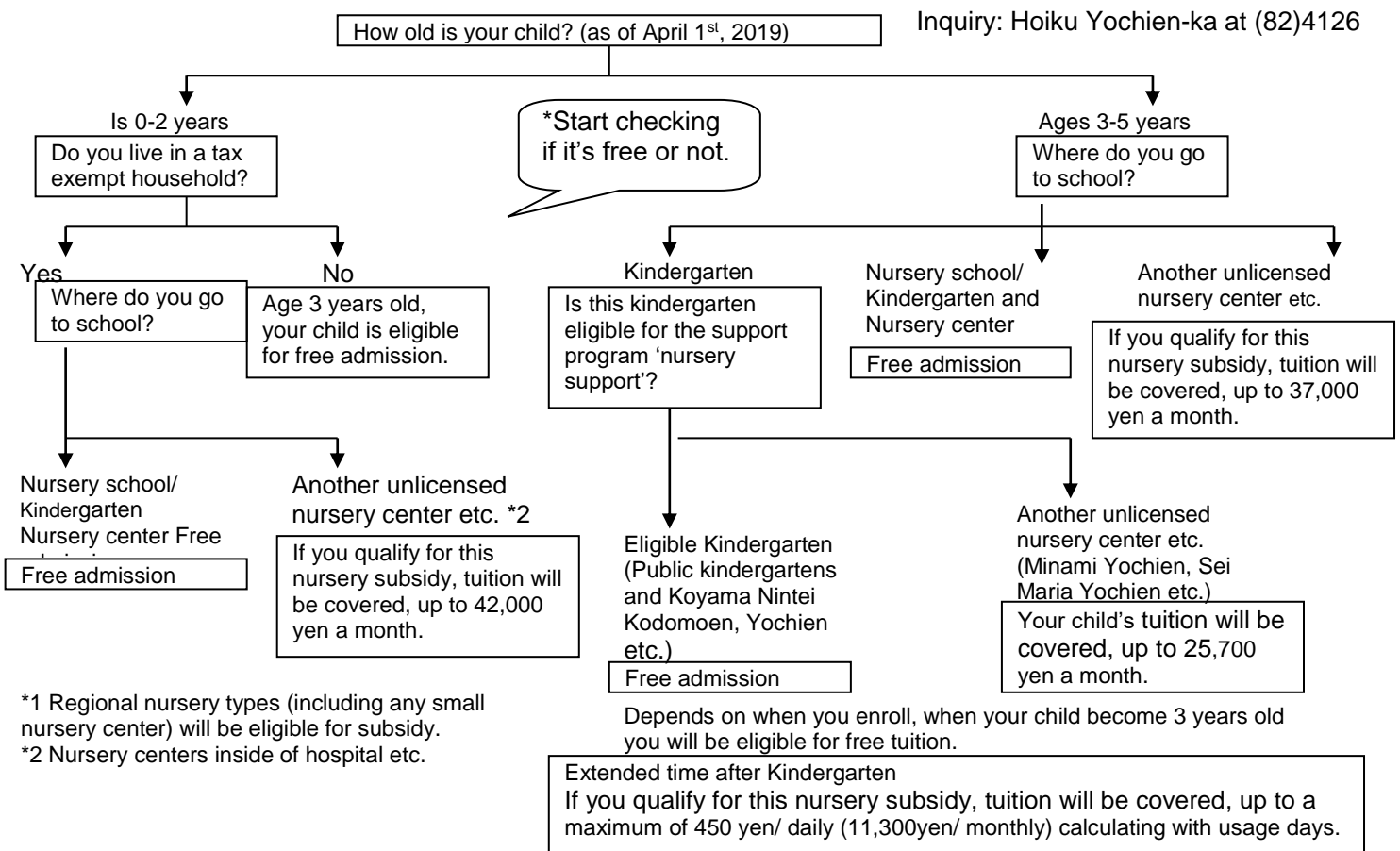
### Events:

1. Free Nursery / Kindergarten Support Starting from October 1<sup>st</sup>, 2020.
2. Enrolling Children in Nursery Kindergarten, or Private Kindergarten for 2020
3. Renewal for your My Number Card
4. Coming Up Fall Event Information Fuji-san Jukyu-no-mori.
5. Premium Shopping Voucher is On Sale
6. Gotemba Citizen's Art Festival ...Kimono Dressing Session.
7. ECOHOUSE INFORMATION
8. City Library News in October
9. October's Calendar of Events

★The Gotemba Newsletter can be viewed on the GIA Internet site : <https://www.gia-gotemba.com>

★Copies of this Newsletter are available at the City Hall, the City Branch Offices, Library, Health Care Center and GIA.

### 1. Free Nursery / Kindergarten Support Starting from October 1<sup>st</sup>, 2020.



\*1 Regional nursery types (including any small nursery center) will be eligible for subsidy.

\*2 Nursery centers inside of hospital etc.

- Side dishes will be prepared on your own expense just as now. However, if your income is under 3,600, 000 yen a year, the 3<sup>rd</sup> child in your family will be free. (Some kindergartens will be free up to 4,500 yen a month)
- Children with development disabilities in a support facility (ages 3-5) and short-term use and sick child day care (after being sick too), family support may be available to cover the charge.
- To be eligible for free coverage, your child needs to be certified as requiring childcare in advance by the city.

\*Please ask for details at the office.

## 2. Enrolling Children in Nursery Kindergarten, or Private Kindergarten for 2020

Inquiry: Hoiku Yochien-ka at (82)4126

Here are the details on how to apply or enroll in nursery kindergarten and Kodomo-en starting from April in 2020. Please check the below for applicability, and submission dates.

### [Subject]

- Kindergarten, Kodomo-en (Inno Kodomo-en's long time childcare or Koyama): Infants from 0-5 years old that cannot be raised by working family members.
- Exceptional local type of kindergarten: Infants from 0-2 years old that cannot be raised by working family members.
- Inno Kodomo-en: Short time childcare ----- Infants from 3-5 years old

### [Application Distribution

#### (Enrollment, Certification and Continuation Procedure)]

#### Starting from October 1<sup>st</sup> (Tue.) to November 29<sup>th</sup> (Fri.)

Where you can receive application and where you submit: Hoiku Yochien-ka.

From October 30<sup>th</sup> (Wed.) to November 5<sup>th</sup> (Tue.) we are accepting applications.

Please get your application and submit it.

- \* Because there are many applicants who wish to enroll, there is possibility that you can't enroll or have to wait until there is a vacancy for your desired kindergarten. Please keep that in mind.
- \* You will be given more details when you receive your application.

### [Application for Present kindergartener for continuous use]

Where you can receive application and where you submit:

Submit to your kindergarten by **November 20<sup>th</sup> (Wed.)**. Application is available after October 10<sup>th</sup> (Thu.).

- \* One of your children is now at kindergarten and other siblings need to transfer to another place, you need to submit your application to Hoiku Yochien-ka.
- \* If your children are outside of city, Hoiku Yochien-ka will send applications to you.

## 3. Renewal for Your My Number Card

Inquiry: Suishin-ka at (82)4195

- Expiration for my number cards  
If you made a card under 20 years-old: expired 5<sup>th</sup> birthday after you issued.  
If you made a card over 20 years-old: expired 10<sup>th</sup> birthday after you issued.  
\*It is written in your card.

If you keep using your card, you can reissue 3 months before your expiration date for free. Until you receive the new card, it will take about a month. Please apply soon.

\*Municipal section will issue your card. Please bring your my number card with the person present or same household.

\*The day you receive the card, we have to match your face and to photo, so you have to come. Giving you the card after the expiration date, you will be charged 800 yen for handling and another 200 yen for a digital certificate.

- Expiration for Digital certificates

No matter how old you are, expiration date is 5<sup>th</sup> birthday after being issued. If you keep using your card, you can reissue 3 months before your expiration. So please bring your card and be present yourself.

\*if a third person applies for it for you, we can't issue on the same day so you have to come to our counter twice. Please be aware.



My number card expiration date

Digital certificate expiration date

#### 4. Coming Up Fall Event Information Fuji-san Jukyu-no-mori.

Inquiry: Fuji-san Jyuku-no-mori at (80)3776  
Kanko Koryu-ka at (82)4622

- **Workshop in The Wood** (Halloween Craft)  
Date & Time: All Saturday, Sunday and Holiday until October 27<sup>th</sup>. Starting from 9am to 4pm.  
Participation fee: 200 yen to 800 yen.
- **The 7<sup>th</sup> Friendship Festival with self-defense members**  
Date & Time: Sunday, September 29<sup>th</sup>, from 10am to 3pm  
Content: Free Tonjiru (pork miso soup) served by rolling kitchen, observing self-defense vehicles and photo shootings, observing inside a helicopter (in the case of rain, it'll be cancelled), musical performance by self-defense.  
\*Event contents might be changed.
- **Ohfunato Saury Fest 2019**  
Date & Time: Saturday, October 5<sup>th</sup>, from 10am to 3pm  
Content: Free Distribution of fresh 1,000 saury and sale for Specialty goods and Cooked Seafood.
- **The 24<sup>th</sup> Sachets Patchwork Quilt Exhibition (The 8<sup>th</sup> Workshop Market)**  
Date & Time: From Saturday, October 12<sup>th</sup> to Monday, 14<sup>th</sup>, from 10am to 4pm.  
Content: Patchwork quilt gallery, Hand made market and work shop (no reservation need)

#### 5. Premium Shopping Voucher is On Sale

To ease the your expense due to tax increase, we sell premium shopping vouchers.

Date & time: From October 1st (Tue.) to January 31st, 2020 from 9am to 5pm.

(except Saturday, Sunday, holiday, from December 31st to January 3rd, 2020)

Where to buy: Post office in the city (Gotemba, Higashi-tanaka, Kamicho, Fujioka, Koyama, Harasato, Morinokoshi, Tamaho, Takane)

Subject: People who are tax exempt from municipal taxes for 2019 and their children who were born April 2nd in 2016 to September 30th in 2019.

\*If you are eligible, Gotemba city will send you the necessary documents by mail.

Things you need: Claim ticket and ID etc.

Inquiries: Shoko Shinko-ka (Commerce and industry Dividion) at (82)4683.

#### 6. Gotemba Citizen's Art Festival ...Kimono Dressing Session.

※Need to apply in advance.

Date: Saturday, November 2nd and Monday, 4<sup>th</sup> from 10:00 am to 3:00 pm

Place: Multipurpose Hall at Chichibunomiya Memorial Park

Things to Bring: Necessary accessories for kimono (Hadagi, Tabi and Obi, Koshihimo etc.)

\*Rental service is available.

Fee: 1,000 yen

Application Form:

Go to Shakai Kyoiku-ka, Civic Center or download from Gotemba city website, and fill application form.

Applications can be made by Friday, October 11<sup>th</sup> by Mail or Fax to:

〒412-8601 Shakai Kyoiku-kanai Gotemba Shimin Geijyutsusai Jikko linkai Jimukyoku  
(Citizen's Art Festival Committee Office) or in person. \* Tel: (82)4319, Fax: (81)0370.

#### 7. ECOHOUSE INFORMATION / Inquiry: Eco House Gotemba at (88)3337

◆FREE ITEMS: Baby bed, Dehumidifier, Printer (Canon MP970), Child bed with storage furniture

◆NEGOTIABLE ITEMS: Dolls for the boy's festival in May (3 tiered displays)

◆CHARGED ITEMS: Folding pipe bed, Bicycle (26 inches)

◆DONATION NEEDED: Pedal sewing machine, Facsimile videophone, Refrigerator, Kid's bicycle (18 & 20 inches)

◆NEGOTIABLE ITEMS: Refrigerator, Automatic washing machine (6kg), Baby stroller

※Fax and Telephone answering machine service not available.

#### 8. City Library News in October / Inquiry: (82)0391

○Hours of Operation: 9:00 am - 9:00 pm ●Closure Dates: 21st (Mon). \* 3rd Monday of this month.

○Book Start: 2nd (Wed) and 16th (Wed)

\* First-time reading for mothers with 6 month-old infants at the Hoken Center (Health Care Center).

○OHANASHI HIROBA: Every Saturday from 2:30pm (Picture-book reading by volunteers)

○OYAKO OHANASHI-NO-KAI: 9th (Wed) & 23rd (Wed) from 10:30am (Picture-book reading by librarians)

○Recycled Book Day: 20th (Sun) from 9:00 am to 6:00pm \* Get free books!

## 9. October's Calendar of Events

DATE	EVENTS/ TIME	LOCATION	DATE	EVENTS/ TIME	LOCATION
1 (TUE)	Legal Counseling (1:00pm) (Reservations required)	City Hall	17 (THU)		
	Seminar for Babies (1:00pm)	Health Care Center	18 (FRI)	Adult Health Consultation (9:30am) (Reservations required)	Health Care Center
2 (WED)	Health Checkup for Babies 6 months old (1:15pm)	Health Care Center		Workshop for Pregnant Women (1:00pm) (Reservations required)	
	Book start		19 (SAT)	OHANASHI HIROBA (14:30pm)	Health Care Center
3 (THU)			20 (SUN)	Recycled Book Day (9:00am)	Library
4 (FRI)	Health Consultation for Toddlers 2 years old (9:00am)	Health Care Center	21 (MON)		
	Vaccination Shots (BCG) (1:30pm)		22 (TUE)		
5 (SAT)	OHANASHI HIROBA (14:30pm)	Library	23 (WED)	OYAKO OHANASHI NO KAI (10:30am)	Library
6 (SUN)				Health Checkup for Toddlers 3 years old (1:00pm)	Health Care Center
7 (MON)	Health Consultation for Babies and Children (9:15am)	Health Care Center	24 (THU)	Mental Care Consultation (10:00am) (Reservations required)	City Hall
8 (TUE)	Health Checkup for Infants 18 months old (1:15pm)	Health Care Center	25 (FRI)		
9 (WED)	OYAKO OHANASHI NO KAI (10:30am)	Library	26 (SAT)	OHANASHI HIROBA (14:30pm)	Library
	Health Checkup for Toddlers 3 years old (1:00pm)	Health Care Center	27 (SUN)		
10 (THU)	Mental Care Consultation (10:00am) (Reservations required)	City Hall	28 (MON)	Vaccination Shots (BCG) (1:30pm)	Health Care Center
11 (FRI)			29 (TUE)	Health Checkup for Infants 18 months old (1:15pm)	Health Care Center
12 (SAT)	OHANASHI HIROBA (14:30pm)	Library	30 (WED)		
13 (SUN)			31 (THU)		
14 (MON)					
15 (TUE)	Legal Counseling (10:00am) (Reservations required)	City Hall	<p><b>Tax payments for November are due on the October 31<sup>st</sup> (Thu.).</b></p> <ul style="list-style-type: none"> <li>• Citizens of city tax of 3<sup>rd</sup></li> <li>• National Health Insurance tax of 4<sup>th</sup></li> <li>• Medical Care System for people aged 75 and over (Koki Koreisha Iryo Hoken) of 3<sup>rd</sup></li> </ul> <p>~ Please make your payment by the due date with a convenient fund transfer. ~</p>		
	Seminar for Babies (1:00pm)	Health Care Center			
16 (WED)	Health Checkup for Babies 6 months old (1:15pm)	Health Care Center			
	Book start				

☆Translated by KH of GIA volunteers

**GIA Gotemba International Association**  
Tel: 0550(82)4426 Fax: 0550(81)6439 E-mail: [gia@mail.wbs.ne.jp](mailto:gia@mail.wbs.ne.jp)